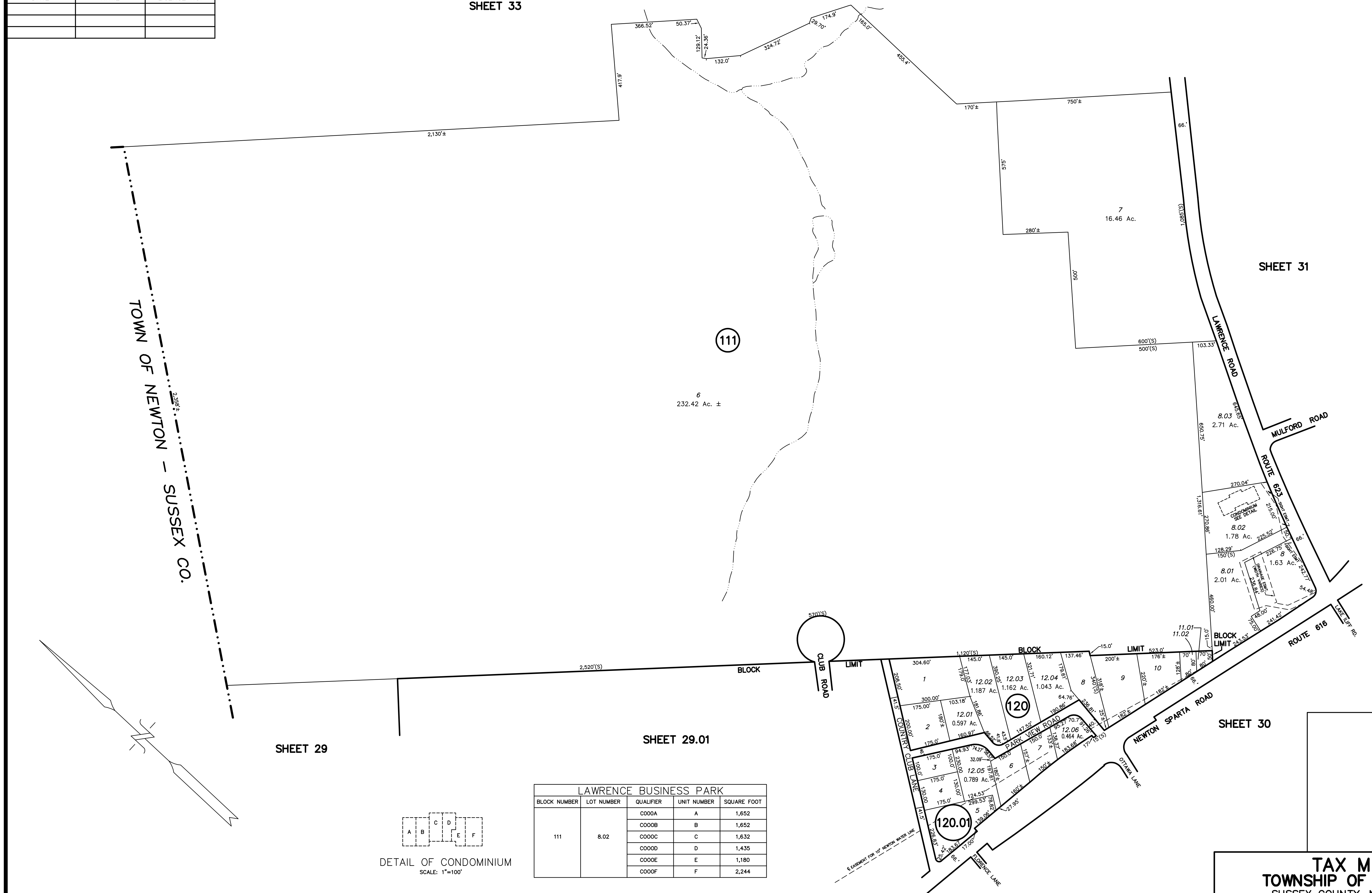


REVISIONS		
DATE	NAME	LICENSE NO.

SHEET 33

TOWN OF NEWTON - SUSSEX CO.

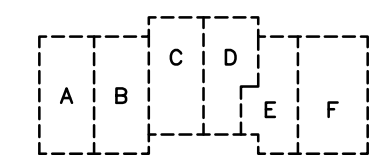


SHEET 29

SHEET 29.01

SHEET 30

SHEET 31



DETAIL OF CONDOMINIUM
SCALE: 1"=100'

LAWRENCE BUSINESS PARK				
BLOCK NUMBER	LOT NUMBER	QUALIFIER	UNIT NUMBER	SQUARE FOOT
111	8.02	C000A	A	1,652
		C000B	B	1,652
		C000C	C	1,632
		C000D	D	1,435
		C000E	E	1,180
		C000F	F	2,244

NOTE:
THIS MAP HAS BEEN REDRAWN USING COMPUTER AIDED DRAFTING/DESIGN (CAD/D) BASED ON THE MAP PREPARED BY DANIEL E. KENT, III N.J.L.S. NO. 14818 ON APRIL 1999.

TAX MAP
TOWNSHIP OF ANDOVER
 SUSSEX COUNTY, NEW JERSEY
 SCALE: 1"=200' DATE: JANUARY 2014
WILLIAM F. STOHR
 PROFESSIONAL LAND SURVEYOR No. GS27890
 129 LINCOLNDALE ACRES
 WASHINGTONVILLE, NY 10992
 TO SHOW CONDITIONS AS OF 11/01/2013